

THE FOGHORN

***Newsletter of the Marine Modelers Club
of New England***

2019-- Our 29th Year!!

May 2019

Commander: Mike Hale	508-880-3051 commander@marinemodelers.org
1st Officer: Frank Cook	508-446-0954 1stoffer@marinemodelers.org
Events Officer: Charlie Tebbetts	508-404-5987 events@marinemodelers.org
Publicity Officer: (vacant)	publicity@marinemodelers.org
Treasurer/Membership: Linda Arini	781-391-0772 treasurer@marinemodelers.org
Newsletter Editor & Webmaster: Bill Michaels	978-760-0343 newsletter@marinemodelers.org

Note: Use officers@marinemodelers.org to reach all the club officers as a group.

Upcoming Events

Saturday, May 18, 2019, 11am – 3pm: Fun Float at Memorial Park Beach in Sharon, MA.
This will be our first outdoor sailing event of the season. The theme for the day is “Sailboats”, but all types of models are welcome.

Saturday, June 1, 10 am – 5pm: Static display at the Piscataqua RiverFest, Portsmouth, NH.
This is a new event, and we were invited to exhibit by the organizers. See below for more information.

2019 Membership Dues

It is that time of year-- time to pay your 2019 dues! The membership form is attached to this issue of the Foghorn, and is also available on the club website. You can pay Linda Arini in person at the next meeting, mail her a check, or use PayPal. (Use the PayPal button on the main page of the club website.)

Dues are \$25 per year. If you need the form, you can always find it on the club website.

Important: Linda had to open a new club checking account, and she had to put her name on it. If you are mailing a check for your dues, please be sure to make it out to **Linda Arini**.

If you don't pay your dues soon, it will affect your receipt of the newsletter-- we'll start sending you two copies! (How's that for a threat? Better pay up!)

Wood Hole Model Boat Show

The 2019 Woods Hole Model Boat Show was held the weekend of April 13-14, in the village of Woods Hole, MA. Turnout was similar to previous events, with a good diversity of models on display in the usual venues throughout the center of the village. Saturday morning started with rain, but it let up by 1pm, and Sunday was nice and sunny. The breeze was light to moderate for the RC sailboat races on Eel Pond.



Our club had a good turnout, with a good selection of models on display. Members participating included Lou Hills, Gaspar LaColla, Bill Michaels, Eric Bertelsen, Mike Hale, Linda Arini, Charlie Tebbetts, Shaun Kimball, and Bob Okerholm.

Left: A partial view of the MMC display area-- We had about five more tables than shown here...

Icebreaker Fun Float Meeting Report

I wasn't able to attend our first outdoor on-the-water event of the year, but Charlie and Shaun took some notes and sent some photos. Charlie provided a summary of the event: "The 2019 Ice Breaker turned out to be a cool, windy and overcast day. Lake Massapoag was a bit rough for the little boats. Mike Hale, Shaun Kimball, Linda Arini, Johanna Okerholm, Frank Cook and myself were in attendance. The wind would have been welcome if it were a sail boat day, but not much fun for the power boats. We're hoping for a warmer day and a little less wind for our next sail boat event in May!"

Below: You can tell it was a chilly day!



The water a big rough, especially for the smaller boats. Shaun Kimball reported that his Seguin tug was rolled on her beam ends when caught broadside by a big wave, but he managed to get her back to shore in one piece!



I wish I had been able to attend-- I love running my USCG Motor Lifeboat in conditions like this!

Charlie sent this photo of Linda and Johanna:



Shaun sent this photo of Linda Arini's Green Ripper climbing a wave.....



Reminder: Meeting Cancellation Notices

If you would like to get notifications that a scheduled event has been delayed, postponed, or canceled, we need your text number. Please send me your cell number, and I'll add it to the list to share with the other officers.

The best way to get your number to us would be send an email to the officers@marinemodelers.org list. You can also text me directly (978-760-0343), and I'll add you to the list. (Please be sure to identify yourself in your message- otherwise I won't know who 781-555-1234 is!) I will compile the master list and then give it to Charlie, our Events Officer, who will likely be the one sending out a notice if needed.

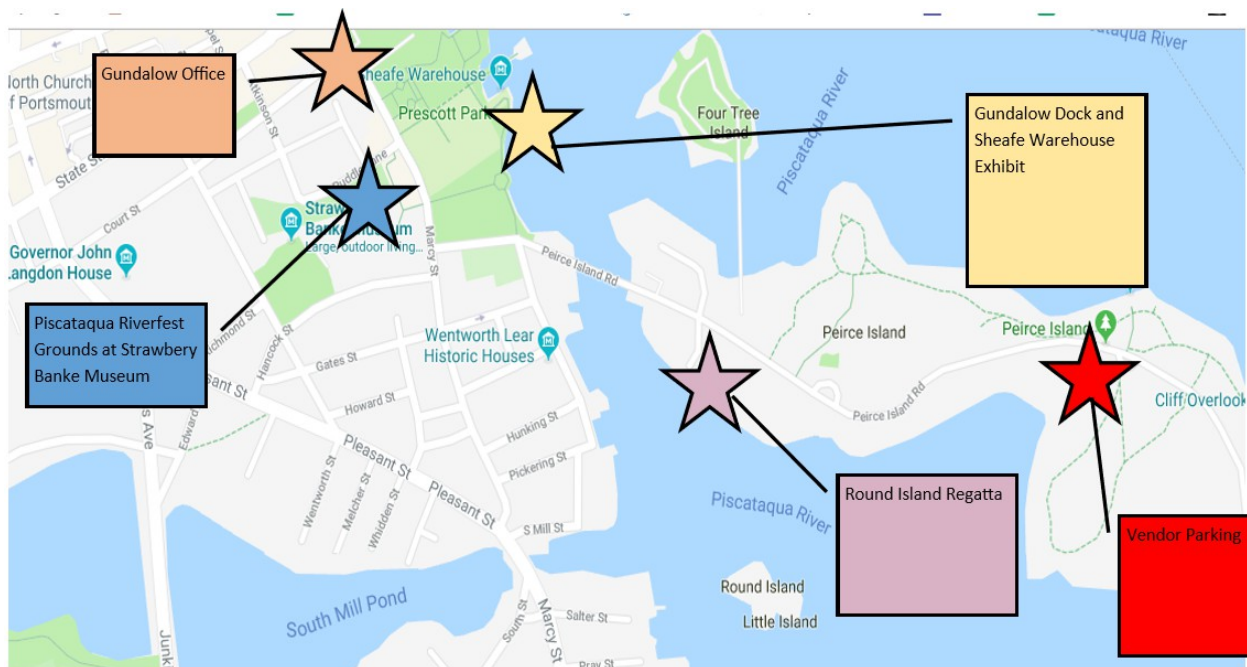
Piscataqua RiverFest : Saturday, June 1, 10am - 5pm

The Festival to celebrate Portsmouth and the River will be held at the Strawberry Banke Museum and in Park, in Portsmouth NH. This is the first year for this event, and we were contacted by the organizers and asked to participate. At the February 2019 meeting, the membership voted to accept the invitation, but as a display-only event-- we did not want to commit to bringing the portable pool for the Noodle Tugs.

The RiverFest is a combination of festival, on the water race, traditional boat show, and general celebration. Part of the event (in the park) is free to the public and part of the event is ticketed (boat show, etc). There are a variety of activities and events, including full scale and RC sailboat racing, music, vendors, exhibits, food, etc.

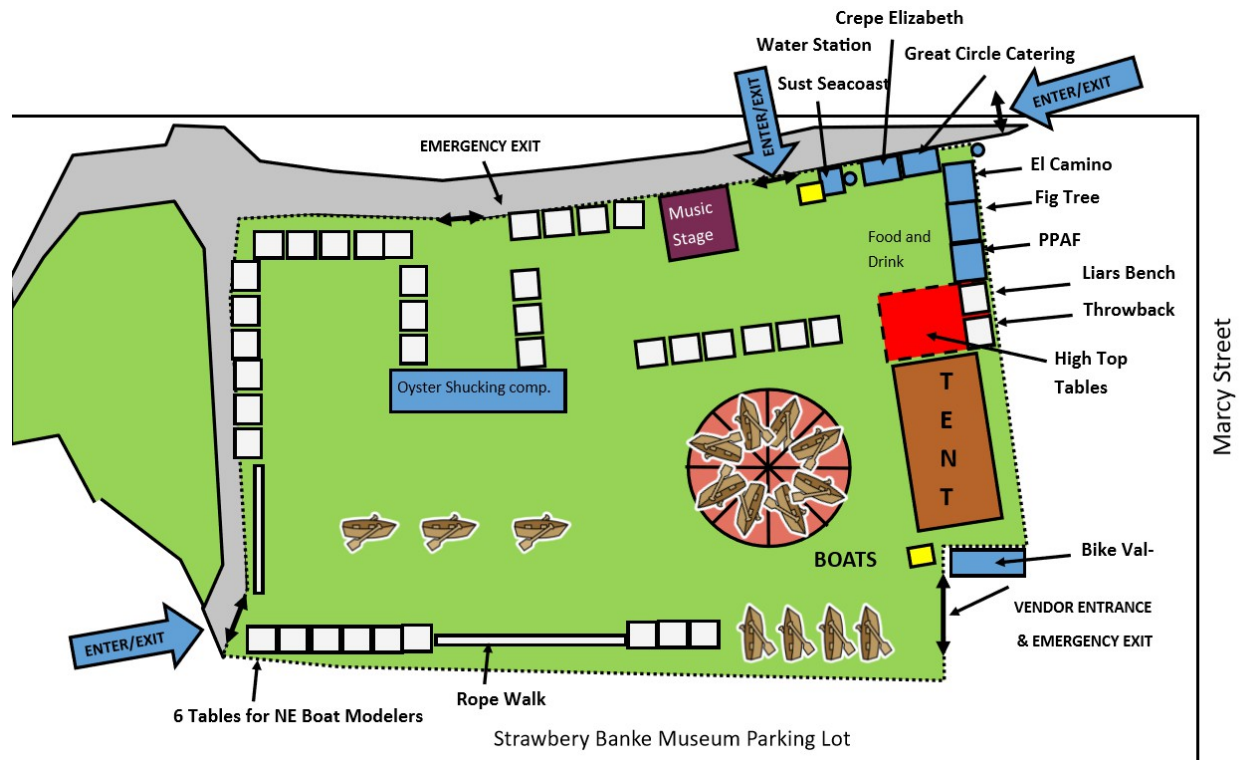
The RiverFest website is here: <https://piscataquariverfest.wordpress.com/> I would recommend looking at the "Schedule and Activities" link to get a better idea of what is going on that day.

The schedule of activities is here: <https://piscataquariverfest.wordpress.com/schedule/> . Below is a map of the area-- we will be at the location marked by the blue star. Downtown and historic Portsmouth in the upper left part of the map and beyond.



Many of the events will be at the Strawberry Banke Museum and Prescott Park. If you haven't been there, this is a lovely area to walk around, with a big park right on the river. Across the way is the Navy Shipyard, and there is a lot of commercial and recreational traffic going up and down the river.

MMC Club Display: We will have a 10x20' display area near the main entrance, on the grounds of the museum.



We are inside the fenced area, so people will have to purchase tickets to get in. The Festival organizers will provide free tickets to our club members who are bringing a model to display. Note that this is a preliminary layout-- it shows us with six tables worth of display space-- we have informed the organizers that we'll only be using half of it.

We will be able to drive right up to the area by our tables to unload our gear, but then we'll have to park our cars in the vendor's lot, which is about 1/3 of a mile away. (Similar to Salem! - Ed.)

Setup: Setup is from 8 to 10am. Participants need to bring their own tables and chairs. So far we have Charlie Tebbetts bringing a 30" by 72" folding table; Bill Michaels a 10'x10' pop-up awning. We'll need a couple of additional folding tables, at least.

If you are interested in participating, please let the officers know. We need a few more tables and some models to fill them! Look for emails with additional details as we get closer to the date.

Boating Basics

Displacement and model boats: A simple working definition of “displacement” is that it is the weight of the volume of water that is occupied by a boat's hull when floating at rest. If your model weighs five pounds, then it will sink in the water until it has displaced five pounds of water.

Displacement is usually not a problem for larger models of smaller boats. It can be an issue for smaller models, though, and for narrow hulled smaller warships. For example, I have a 26 inch long fiberglass hull for a Coast Guard Cutter. Floating at the scale waterline, this model will displace 2.5 pounds. That means that if I want the model to float at the scale waterline, the model must weigh no more than that! That is total weight- the hull, superstructure, motors, batteries, etc.

It is a good idea to get an idea of what your model's displacement will be before you start construction. This will give you an idea of how carefully you need to manage the weight of items against a target (i.e. for a small warship) or to understand how much room you need to leave for ballast in a big tug hull. I know upfront that I'll have to be careful when I build the model- to save weight that I can use on batteries and ballast to make the model more stable. Here are three ways you can figure out a hull's displacement:

- (1) Calculate the value: If the displacement of the real ship is known, you can do the math. For example, the displacement of the USCGC Reliance is 1,000 tons. Divide by the scale, cubed. For 1/96 scale, that is $(96 \times 96 \times 96 = 884,736)$. Convert the answer from tons to pounds by multiplying by 2240. In my case, I get 2.5 pounds. This value assumes that the shape of the model's hull is an accurate copy of the real ship's shape. Note that ship displacement is usually listed in either long tons (2240 lbs) or metric tonnes, never short tons (2000 lbs).
- (2) Direct measurement: If you are starting with a plastic or fiberglass hull, you can do a direct measurement in water. Mark the waterline at the bow and stern with a piece of tape, and place the hull in water. Add weights to the hull until it floats at the proper waterline. The total amount of weight you added is your “weight allowance” how much weight you have to “spend” on everything being added to the empty hull. (Add the weight of the empty hull to this total if you want to know the actual displacement.)
- (3) Estimation by volume: This is an alternative in the event you have an empty plastic hull as in the previous example, but don't have a scale or a suitable test tank. For this method, mark the hull's waterline on the inside, and make sure it is level. Then fill the hull with water up to the waterline. Pour the water out into a container to measure the volume, then calculate the weight. (1 fluid ounce = 1.04 ounces at 62F.) The computed value will be a little bit light, as it loses the volume occupied by the thickness of the hull, but it will be close. (If you have a plastic hull that is 1/16th of an inch thick, adding an additional 1/16th inch of water to the hull will help compensate.)

2019 Events Schedule

Here is the 2019 Club Schedule. Note that this is subject to change, and that updates will be posted on the club website, as well as sent via email.

Date (Saturday, unless otherwise specified)	Event
March 16 th 1-4 pm	Indoor Meeting at the UCC Church Hall in Medfield, MA.
March 23 rd , 6-9 pm	Indoor Fun Float at the YMCA Pool in Foxboro, MA. (\$10 co-pay)
Saturday-Sunday, April 13 th - 14 th	Woods Hole Model Boat Show
April 27 th , 11-3pm	Fun Float at Memorial Park Beach in Sharon, MA Theme: Sailboat Day
May 18 th , 11 – 3 pm	Fun Float at Memorial Park Beach in Sharon, MA
June 1 st , 9am - 5pm	Piscataqua River Fest, Portsmouth, NH.
Thursday, June 20 th , 10 am - 4pm	Joint Fun Float with the Mid-Coast Maine Ship Modelers, at Rogers Park Pond in Kennebec, Maine.
Saturday, July 20 th , 12:30 - 4pm	On-the-water event, Redds Pond, Marblehead, MA.
Saturday-Sunday August 3rd-4th	Salem Maritime Festival
Saturday, August 24 th , 12-3pm	Fun Float and Club Picnic at Memorial Park Beach.
Saturday, September 14 th , 9 am - 2pm	Steering Course Regatta at Memorial Park Beach in Sharon, MA.
Saturday, October 5 th , 3- 7pm	Day/night run at Memorial Park Beach in Sharon, MA.
Saturday, November 16 th , 12-4 pm	Club Trip to Herreshoff Museum Tour, Bristol, RI.
Saturday, December 7 th , 12-4 pm	Annual Holiday Dinner at Prezo Bar and Grille, Milford, MA.