

# THE FOGHORN

*Newsletter of the Marine Modelers Club  
of New England*

**2020-- Our 30th Year!!**

**May/June 2020**

<b>Commander:</b> Charlie Tebbetts	508-404-5987 commander@marinemodelers.org
<b>1<sup>st</sup> Officer:</b> Mike Hale	508-880-3051 1stofficer@marinemodelers.org
<b>Events Officer:</b> Frank Cook	508-446-0954 events@marinemodelers.org
<b>Publicity Officer:</b> (vacant)	publicity@marinemodelers.org
<b>Treasurer/Membership:</b> Linda Arini	781-391-0772 treasurer@marinemodelers.org
<b>Newsletter Editor &amp; Webmaster:</b> Bill Michaels	978-760-0343 newsletter@marinemodelers.org

Note: Use [officers@marinemodelers.org](mailto:officers@marinemodelers.org) to reach all the club officers as a group.

## Upcoming Events

All upcoming events are currently on hold. All June Events are cancelled.

**Revised Newsletter Schedule:** Given our current situation, I am scaling back on the number of issues of the Foghorn. Looks for issues to come out every 6-8 weeks or so, instead of monthly...

## 2020 Salem Maritime Festival Cancelled

Dear vendors, demonstrators, performers & partners,

The park staff has conducted an in-depth assessment of the potential risks associated with having the festival this year. It was determined in the interest of employee and public health and safety the event should be canceled. We are working on multiple online virtual experiences that can be offered this season as an effort to continue engaging visitors virtually, as well as examining possibilities for on-site programming at a smaller scale.

I hope you are all healthy and well.

Thanks,

Susan Russo  
Chief, Division of Visitor Experience & Community Engagement

## Show and Tell (email version)

Several members sent in updates on what they've been working on.....

Greg Evers reports that the 1950s vintage ITO torpedo boat restoration is coming along. The topsides are all painted and reassembled. The hull is all stripped of paint and after a few repairs I can repaint that and install the electronics.



Harold Cohen checked in with an update on the Aristocraft Sailboat he won at the December Dinner. This is prefabricated RC model that dates from the late '80s, I think, Harold said he has painted the model, which makes it look a lot less like a toy.

As I recall, the model is about 20+ inches long, and uses a standard servo for the sail control...

Charlie Tebbetts sent along a couple of photos of his Midwest 30" Lobster boat, taken on the day of its maiden voyage.



**A New Tool for Model Boat Construction**  
by Frank B. Cook

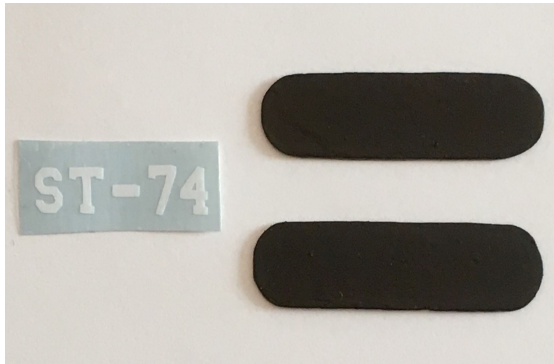
When building scale model boats, I always strive for authenticity and, accordingly, focus on detail. For example, when constructing Army Tug ST-74, a Dumas kit, just simple, plain doors were provided, but I made scale-size hinges and door handles to make the boat appear more realistic.

Similarly, I conduct research to learn more about a boat's history, design, and operation. During a research foray on a web site devoted to the Army's small tugs, I discovered a photograph of ST-74, recently submitted by the daughter of a man who served on that vessel. Not surprisingly, the Dumas kit captured the essence of the boat quite well.

One item that quickly drew my attention was the sideboards on the pilot house. Although it was a black and white photo, it was clear that the sideboards were painted a darker color than the gray hull, most likely black, with white lettering. The number decals provided in the kit were black, as I had seen displayed on the hull of other STs previously researched. I just had to make these sideboards!

The remaining decals provided the appropriate size so creating the sideboard was quite simple. Initially, I planned to carefully paint the white letters, but then I remembered that my middle daughter had recently bought a Cricut Maker (pronounced “cricket”) and told me how its capabilities could extend to my boat building hobby. (For those unfamiliar with the Cricut Maker, it is a cutting machine which uses different types of blades to cut a wide variety of material, such as wood, vinyl, card stock, or fabric.)

Due to the pandemic, we face-timed and I showed her the existing decals, provided the needed measurements, and identified the font type. She downloaded this information into the program on her computer and then sent it to the Cricut. For the decals, she transferred the image to the Cricut Maker which then cut the permanent vinyl into the desired image using a knife blade. She then used a clear, adhesive plastic transfer sheet that acted as a carrier material to set the image where desired.



For the sideboards, I used 1/32” birch plywood shaped into the appropriate configuration, painted black. To add the lettering to the sideboard, I removed the back of the adhesive sheet, placed the letters in the desired place, transferring them by rubbing with a blunt object. With the transfer complete, the top, clear sheet was removed. The completed sideboards with their permanent vinyl lettering were then glued to the pilot house ... and they look sharp!

Now I’m wondering how the Cricut Maker can be used when building future boats!



**From Bob Prezioso:** “At Ed Arini's funeral, I was talking to Harold Cohen about building a cabin cruiser .He said he had a Sterling kit of a Chris Craft 42' Corvette, I bought it. The kit is 48" long. I am changing all the balsa wood to basswood. It is a fun build.” Knowing Bob, I'm sure the finished model will be a real beauty!

**From Dick Boardman:** In 1984, when driving through Searsport Maine, I bought a kit for a model bass boat. It sat in the attic until past last year when I found that the task of building it was way over my head. So, I persuaded a good friend to complete the job. I have researched the model and visited the boat shop where the full 24' deal is still made – Riverside Boat Builders in New castle, Maine - a father and son operation. They have made 19 starting in 1948.

The model was designed by Ted Stinson, a retired headmaster. He went to Deerfield Academy and Brown. He opened a model shop in Wiscasset and at some point, sold his designs to Midwest and his shop to Bluejacket. I cannot be sure I have all this right, but I did have a chance to talk with Ted before he passed away. I have the box in which it came. It runs on the original battery (!) but the drive train needs some help!!

If you go to YouTube and search. -- Lynne Anne in the Haff Pool #2 --you can see the Lynne Anne on her first run. Further if you want to see what someone did with the model, check this out on YouTube. Jet Boat Turns and Burns.

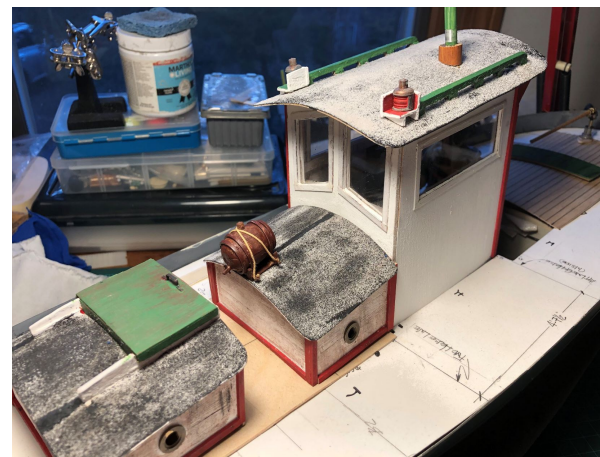
The model needs some work on the drive train. If someone might be willing to help on this, I would be thankful. Or, if someone can point me in the right direction that would be most appreciated.

Dick Boardman

[Rbboatrdman@gmail.com](mailto:Rbboatrdman@gmail.com) 781-235-7413



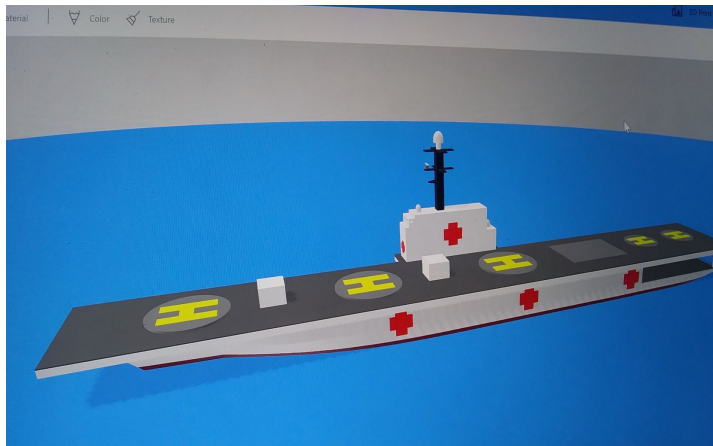
**Bill McKeon:** Bill sent along several photos of his Monterey Clipper. These iconic boats fished the Bay Area beginning in the 30's. Like lobster boats many were built without plans and there were infinite variations.



**Shaun Kimball's update:** I'm currently taking a break from working on my Burke and have started 2 new ships. One is a makeshift vessel, (most likely it'll be a research vessel but I'm open to other opinions as to what it could be and you can ignore the "sea monster" in the picture with it), and the other is a Hospital Carrier. Both are 1:96 scale.



The carrier is a small carrier so the model is just a little over 5ft, so in 1:96 scale it would be a little over 500ft, (and with what's going on in the world today we could use another hospital ship). Basically it would act as a support vessel for the Comfort and/or the Mercy. It would use medical helicopters to transport people to and from medical facilities, the Comfort, the Mercy, or the carrier itself.

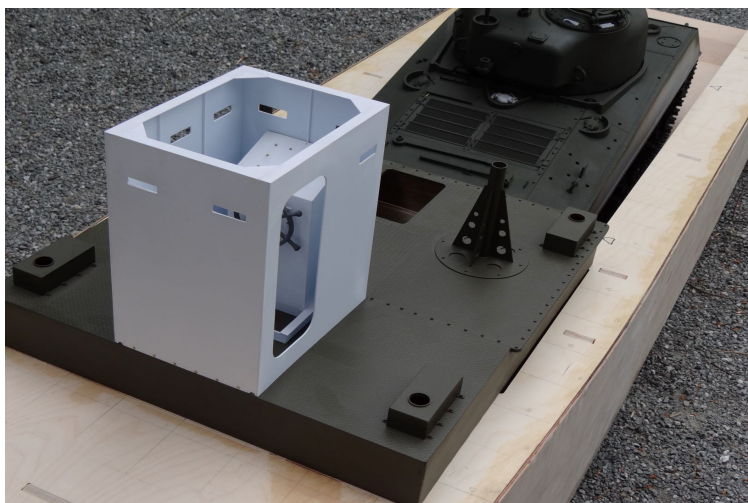


The carrier would have medical facilities of it's own but one of it's biggest roles would be supporting and using search and rescuing helicopters and would also carry various medical supplies to be used and/transported. It would also be equipped with drones for search and rescue along with other craft, (hence the opening under the back of the landing deck. Basically it would be a multi-role-support ship meant to increase the effectiveness of rescue

operations. It is coming along nicely and I should have the island structure finished this weekend (barring any complications!)

**Glen Senkowski** is a new member, and he sent in the following:

The weather is finally getting good enough to drag the 1/6 scale LCM(3) outside and finish building and painting the hull. So I took some pictures! I hope to have sea trials late this year. It is 8-1/2 feet long with twin MFA 800 belt drives, Sabertooth 2x32 mixer ESC, and 12V 36 Amp battery. Will also have sound and proportional smoke.



I got most of my LCM measurements last June off a real dash six that is rotting away in a fjord in Iceland. Great source for interior details!





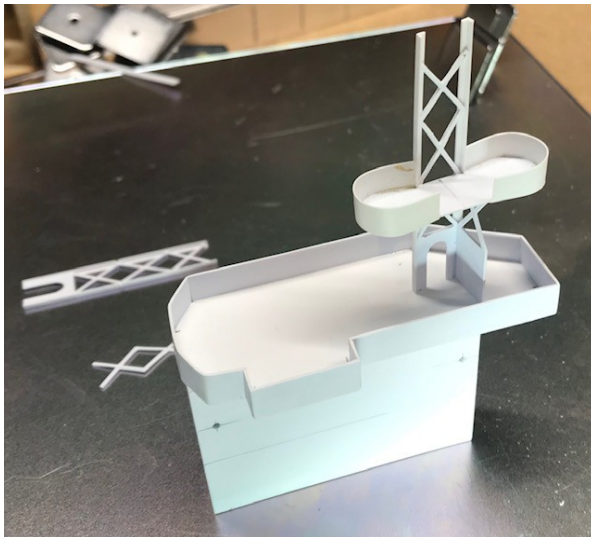
The Sherman is a Dragon M4A3 with Spyker RC upgrade, Sabertooth 2x32 primary ESC, and ElMod Fusion Pro for all the bells and whistles.



The last photo is what an LCM M2HB .50 cal looks like without the shield. There is not a commercial kit available that has it right.

### From the Editor:

Last issue, I wrote about my Harriet Lane paddle wheeler project. A few weeks ago, I set aside the model for a bit, while I sort out design ideas for how I'm going to create a sailing keel. I find that my subconscious will often find a solution while I am working on something else. So I decided it was high time that I finish my 1/144 scale USS Guadalcanal Escort Carrier. I started this project in 2013, and got it to about 70% complete before I shut down the Acton shipyard for our move to New Hampshire in fall 2015. In the last 4 years, about all I have done on the carrier project is to buy some 3D parts and dabble with some plastic models for the air group.



I decided a good way to get going was to finish the carrier's island. One of the last things I had made in Acton was the island's basic box, and then set it aside as I needed to come up with a way to make the tower structure. Looking at it now I decided it would be a good project to use my Cameo4 cutting machine on. I cut the base of the tower and the 3 levels of "X" frames from .020 sheet styrene, then glued them together. The tower came out nice and square--the Cameo allowed me to make four exact copies, all the same size. Here you see the partial tower begin test fit on the the unfinished island.



Here's a shot of the completed structure, glued in place on top of the island, with a coat of primer. (Apologies for the cluttered background!) I painted the tower before gluing it in place, as I didn't think I'd be able to get the paint into all the nooks and crannies if I couldn't spray from every angle! The tower still needs some small details added, and then a final coat of light gray paint. The big radar antenna is a 3D printed part.

I really enjoyed building the island from scratch, detailing it with little bits and pieces of plastic and metal rod.

I did find a great resource for small scale models: Plastruct has a line of styrene ladders and stairways in both N and HO scale. Most of their stuff is made from an ABS plastic, which can be harder to glue with plastic model cements, but they also have some regular styrene parts. I found their plastic N scale ladders to be perfect for my 1/144 scale carrier. I'll also be using a few of their inclined ladders/stairs in other places on the model.

## **Editor's Notes**

We met Dick Boardman when he joined us at the August picnic in Sharon. It was great to hear from him this month and to read his story about the Ted Stinson model. Ted Stinson's company Freedom Song Boat Works was based in Wiscasset Maine, and produced kits for a variety of classic Maine boats. He had a small harbor tug, the Tour Boat Rangely and the Muscongus Bay Lobster Smack, among others. Some of his G-scale designs were published with plans in the early-mid '90s in Garden Railways magazine.

I never met Ted, but I do have a couple of his old kits that I picked up along the way. One of the most unique is the Amazing Grace, a Maine lumber scow. It is a small 15 – 18 inch long model, but I always thought it would be an easy one to scale up to a larger size for RC. A guy in the San Fran club posted a picture of a trio of his Stinson builds online a few years ago. The two on the left were Garden Railways plans, and the one on the right is built from the the Lumber Scow kit.



## 2020 Events Schedule

Here is the 2020 Club Schedule. Note that all of this is subject to change, depending on how the COVID-19 pandemic plays out. Cancellations and Updates will be posted on the club website, as well as sent via email.

(Revised 31 March 2020)

<b>Date</b>	<b>Event</b>
Saturday, March 28 <sup>th</sup> , 6-9 pm	Indoor Fun Float at the YMCA Pool in Foxboro, MA. <b>Postponed-</b> to be rescheduled in Winter of 2021.
Sunday, April 26 <sup>th</sup> , 10-2pm	Fun Float at Memorial Park Beach in Sharon, MA Theme: Sailboat Day <b>Canceled</b>
Sunday, May 17 <sup>th</sup> , 11 – 3 pm	Fun Float at Memorial Park Beach in Sharon, MA (Cancelled)
Saturday, June 6 <sup>th</sup> , 10am - 5pm	Piscataqua River Fest, Portsmouth, NH. <b>Canceled.</b> Organizers are working with the City of Portsmouth to hold a smaller version of the event in mid-August.
Thursday, June 18 <sup>th</sup> , 10 am - 4pm	Joint Fun Float with the Mid-Coast Maine Ship Modelers, at Rogers Park Pond in Kennebunk, Maine. (Cancelled)
Sunday, July 12 <sup>th</sup> , 1pm - 4pm	On-the-water event, Redds Pond, Marblehead, MA. Theme: Warship day. (tbd)
Saturday-Sunday August 1 <sup>st</sup> - 2 <sup>nd</sup>	Salem Maritime Festival. <b>Canceled by the Park Service.</b>
Saturday, August 29 <sup>th</sup> , 12-3pm	Fun Float and Club Picnic at Memorial Park Beach.
Sunday, Sept 13 <sup>th</sup> . 9 am - 2pm	Steering Course Regatta at Memorial Park Beach in Sharon, MA.
Saturday, October 3 <sup>rd</sup> , 3- 7pm	Day/night run at Memorial Park Beach in Sharon, MA.
Sunday, November 15 <sup>th</sup> , 12-4 pm	Indoor meeting, location tbd
Sunday, December 6 <sup>th</sup> , 12-4 pm	Annual Holiday Dinner at Prezo Bar and Grille, Milford, MA.